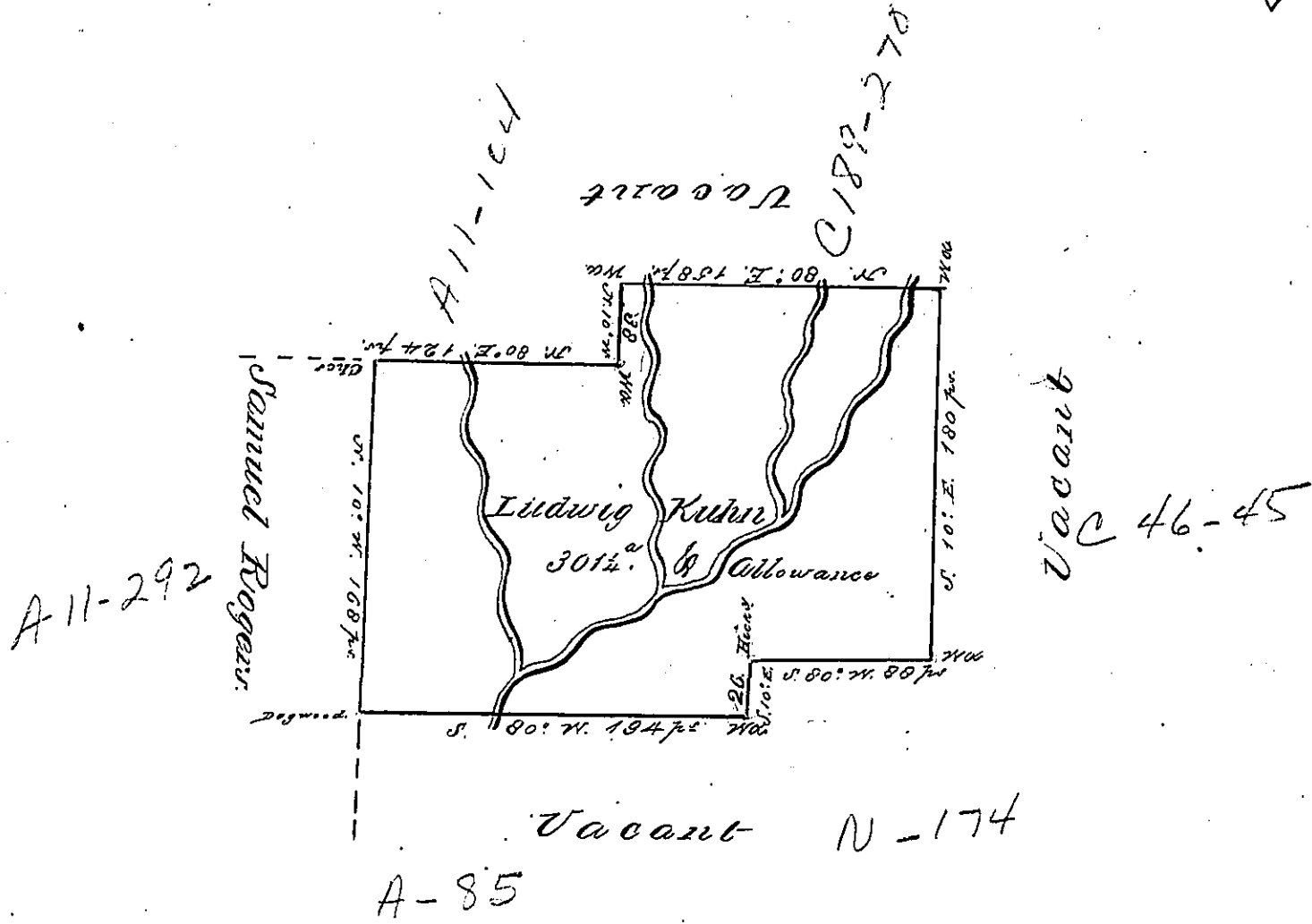


W



A Draught of a tract of Land Called Propior Situate on the waters of the Second South Branch of Nescopeck Creek adjoining Samuel Rogers in the County of Northumberland, Containing Three Hundred & one acres & one quarter of an acre besides the usual allowance of six per cent for Roads &c. Surveyed to Ludwig Kuhn the 18th day of November 1749 in pursuance of an order made April the 3^d. 1769 Number 1566

John Lukens Esq
& Genl.

For Chas Stewart Esq^r & Surv^r
by Wm Gray Surv^r

IN TESTIMONY that the above is a copy of the original remaining on file in the Department of Internal Affairs of Pennsylvania, made conformably to an Act of Assembly approved the 16th day of February, 1833, I have hereunto set my Hand and caused the Seal of said Department to be affixed at Harrisburg, this

Twenty fourth day of January 1877

Wm McArdle
Secretary of Internal Affairs